

Photo Effects

DIP 9, 10, 2006

©kimlizzy 2006

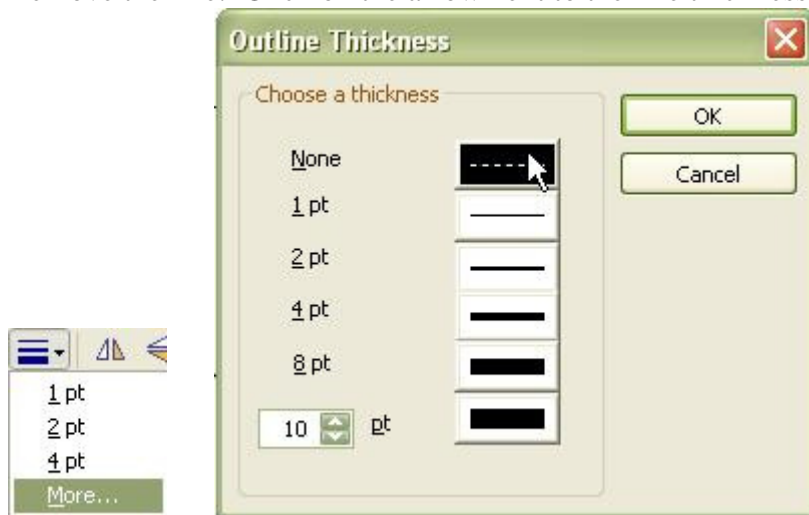


This tutorial uses the marquee tool, feathering, selective tinting, black and white, scratch removal tool, filters, paint bucket, lighting/exposure and colour/saturation.

Open your photo and make a duplicate: Edit/Duplicate whole project.
Close off the original.

Insert/shape/square.

Remove the line: Click on the arrow next to the line thickness button. Select More then None.

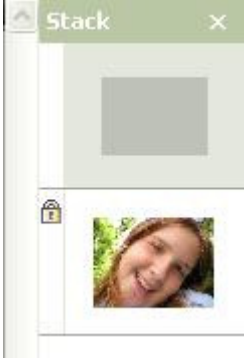


Resize: Format/Resize object to fit canvas/stretch to fit.

Click on the paint bucket and select any colour. You can change it later.




Look on the Stack. You will see the photo is on the bottom.



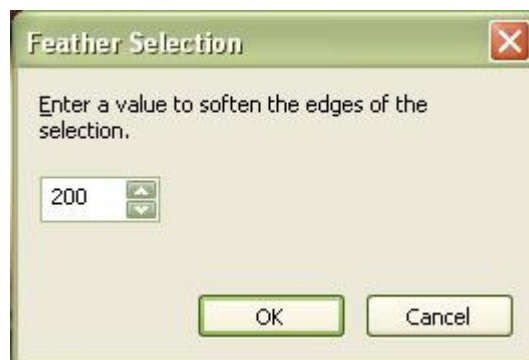
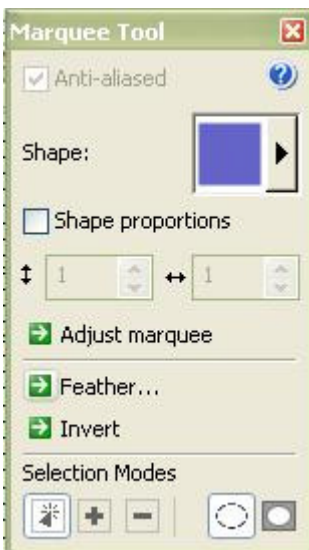
Left click on the photo and drag it to the top.



Keeping the photo selected:

Use the marquee tool  and left click on the top left corner of your photo and drag the mouse down to the lower right corner to select the whole photo.

You will see the marching ants around the edge of the photo.
On the Marquee Palette select Feather and change the value to 200.



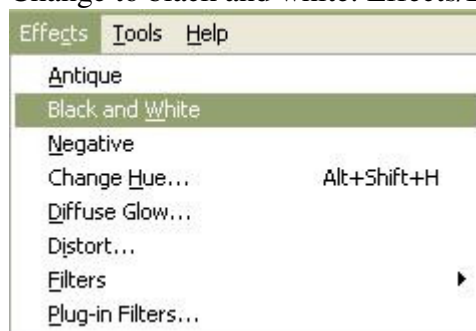
On the Marquee Tool Palette select Invert. The marching ants will change to the outer edges of your photo.



On the toolbar click on the cut button  twice then click on the Object Tool  to complete the step.

Duplicate the photo: Ctrl + d.

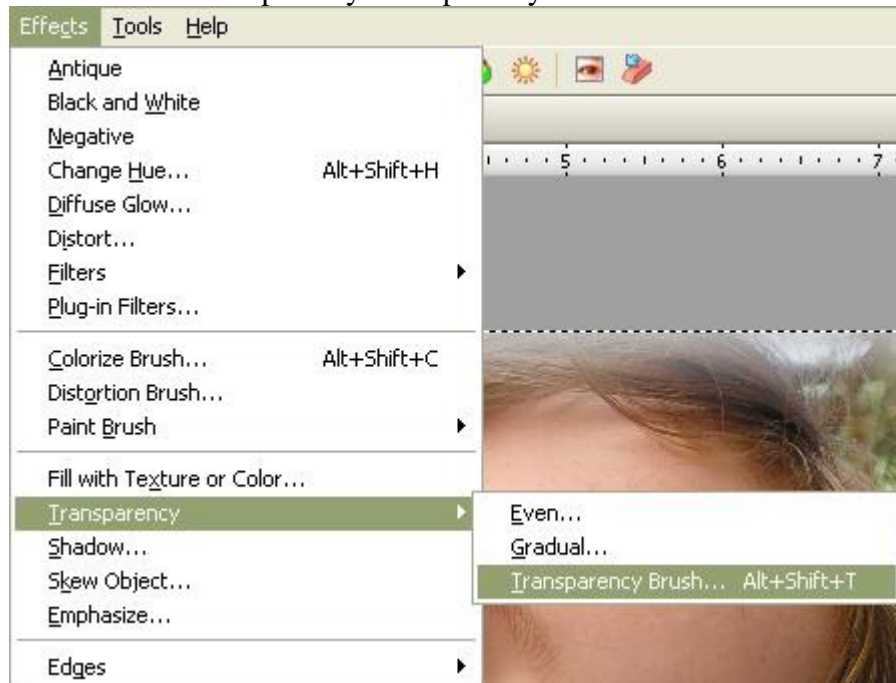
Change to black and white: Effects/Black and white.



On the Stack, drag the black and white layer to the middle.

Click on the coloured photo to make it the active layer.

Go to Effects/Transparency/Transparency Brush

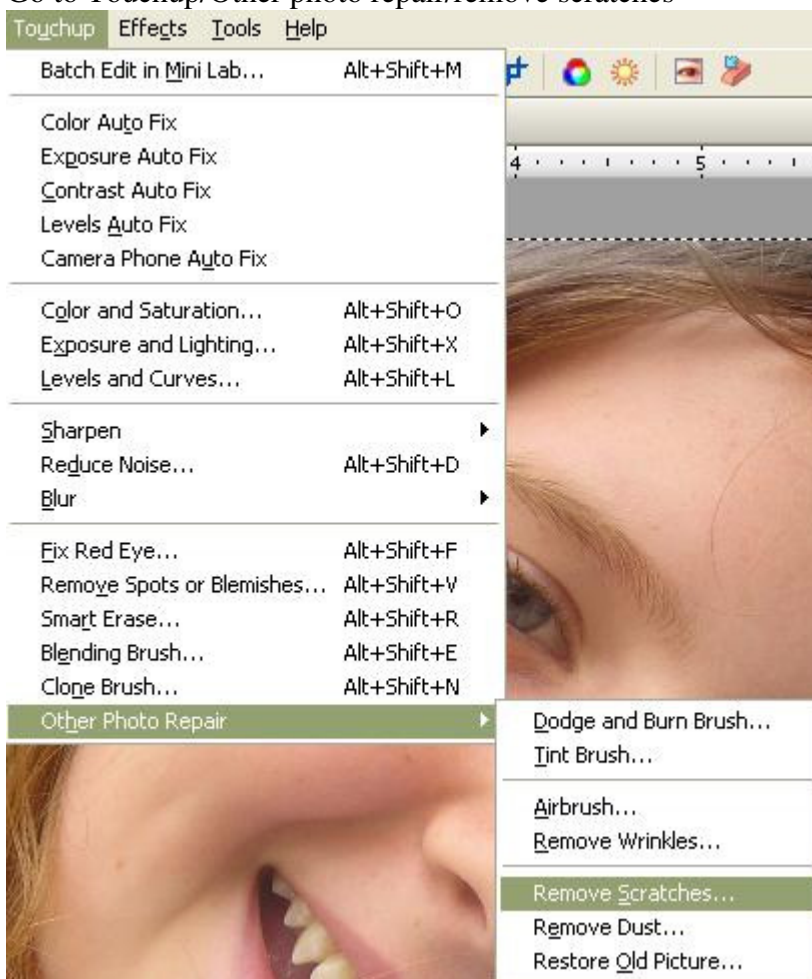


Select Soft brush. Move the slider to change the transparency to 100%. Select a brush size.

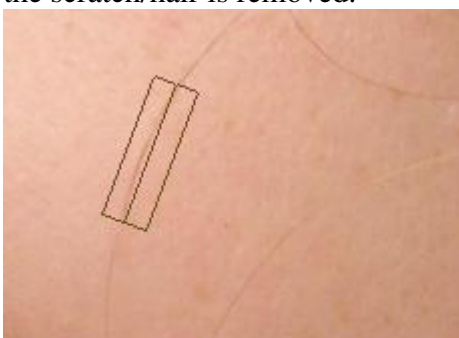
Paint over the part of the photo you want to be black and white. Make the brush smaller to make it easier to erase around edges and small areas.



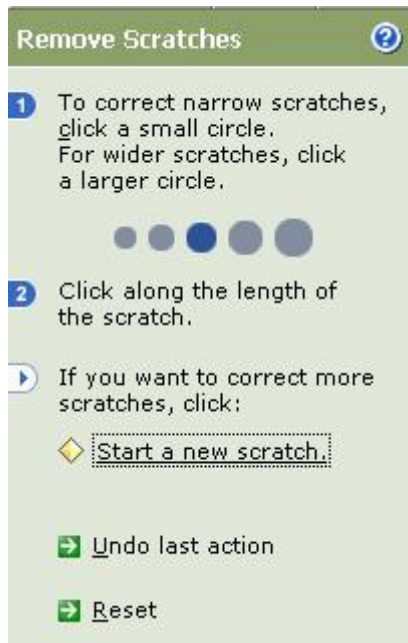
Stray hairs can be removed with the Scratch Removal tool.
Go to Touchup/Other photo repair/remove scratches



Select a brush size then click at the start of a scratch/hair and again at the end (if straight) or at intervals until the scratch/hair is removed.



To remove another scratch/hair click on Start a new scratch and proceed as above.



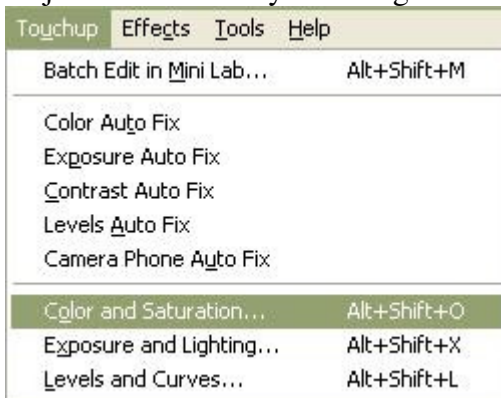
When finished click on Done.

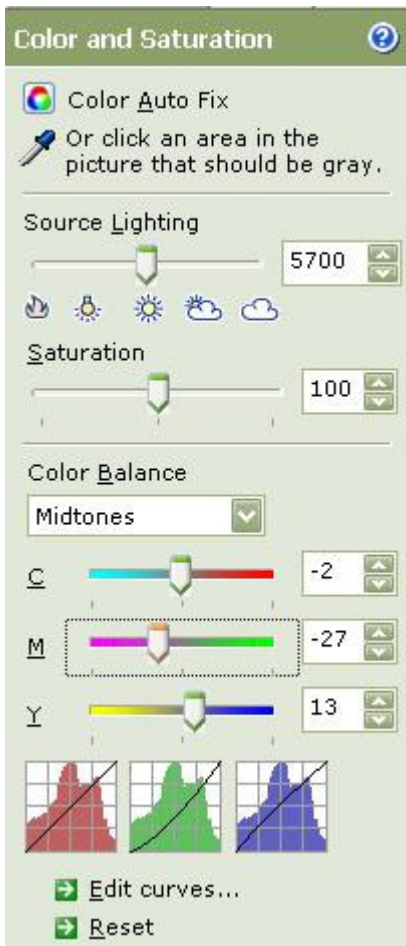


Click on the black and white layer to make it active.

Go to Touchup/Colour and saturation.

Adjust the colour to your liking.





Click Done to go back to the workspace.

Click on the solid colour layer to make it active.
Use the paint bucket to change the colour if required.



Keeping this layer selected go to Effects/Filters/All filters.
Experiment with the different brushes to get an effect you like.
I used Raised Dots.



This is just one example of the many different effects that can be achieved with DIP.
Experiment and have fun.