

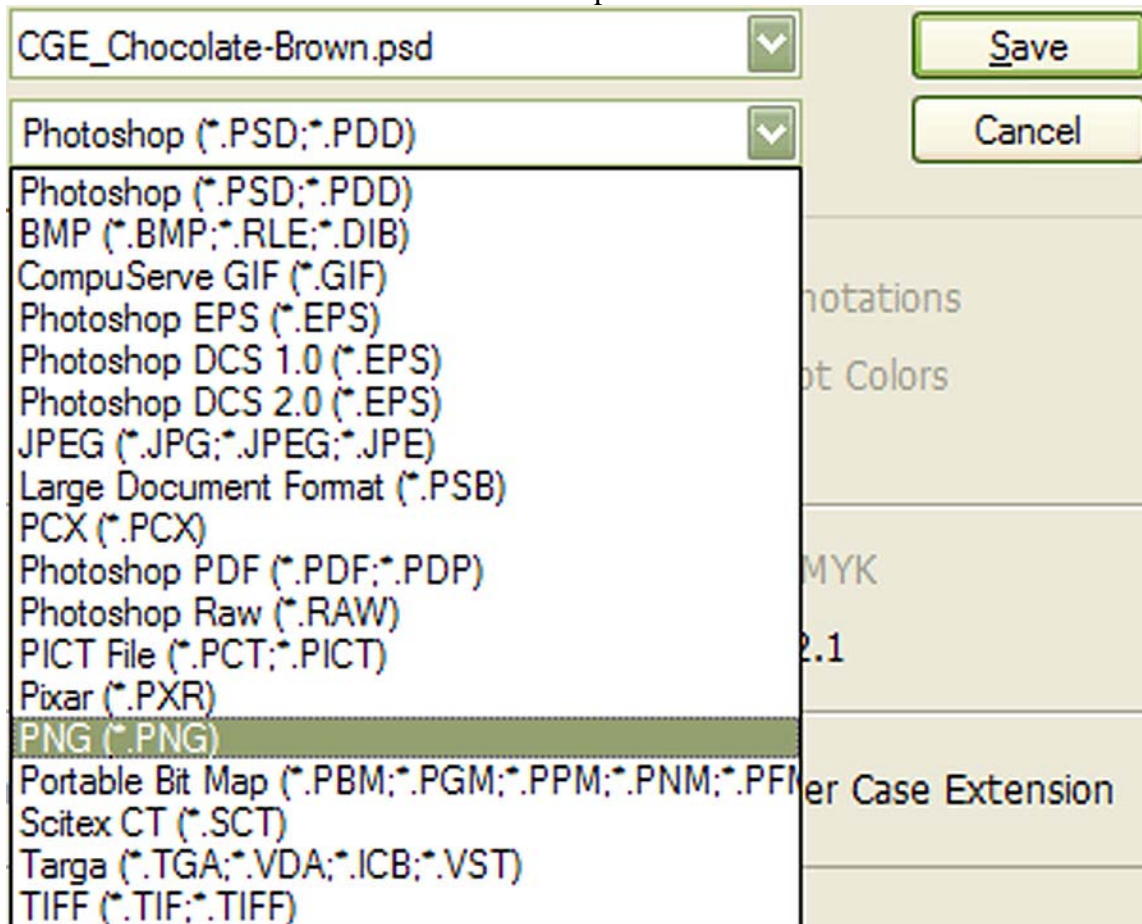
## INSTALLING ACTIONS IN PS ELEMENTS 6

by Kim Hill

If you have any questions about this tutorial, please contact me at [kim@cgsentials.com](mailto:kim@cgsentials.com)

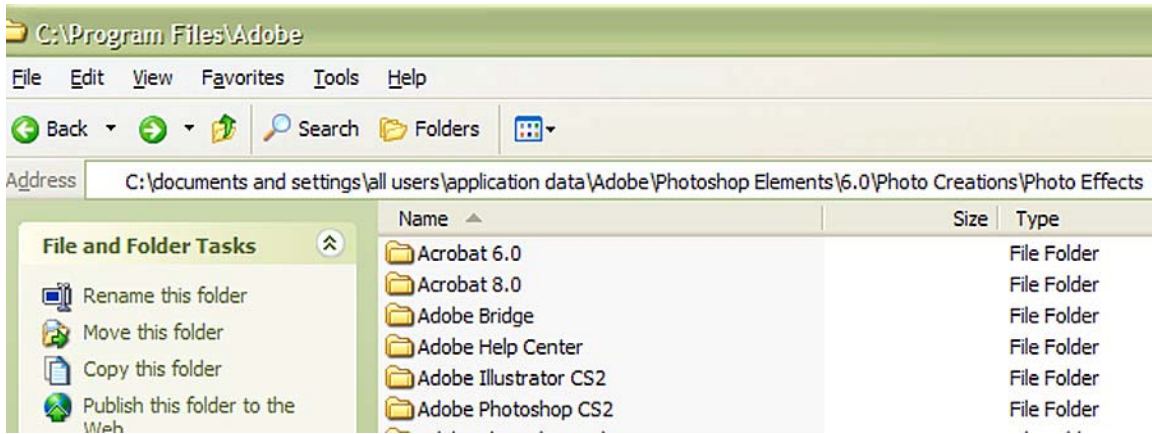
PSE version 6 is a little bit different when it comes to handling actions. But, rest assured, you should be able to convert your current action list to be compatible with just a few simple steps.

First, you need to change the PSD thumbnail to a PNG version. So open up your first thumbnail and select SAVE AS and then choose PNG from the drop down menu.

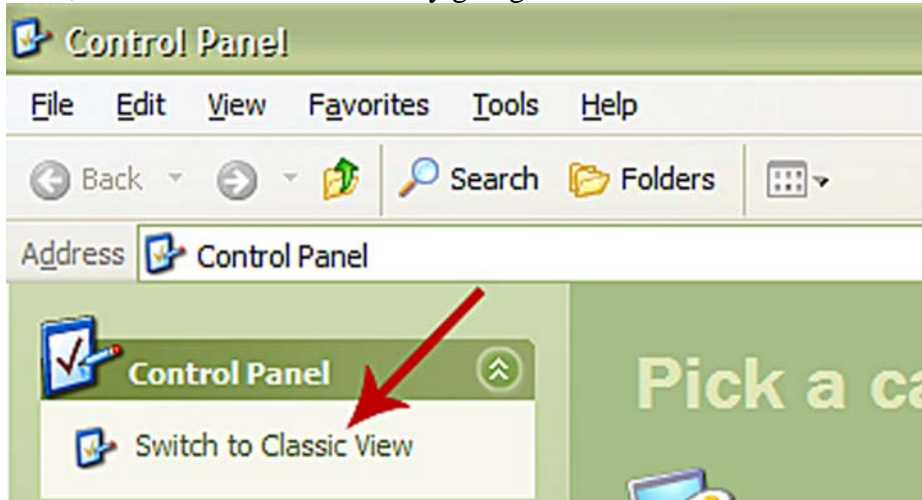


Now you need to save it in the same folder that your action is located. When done with that, close out the entire program.

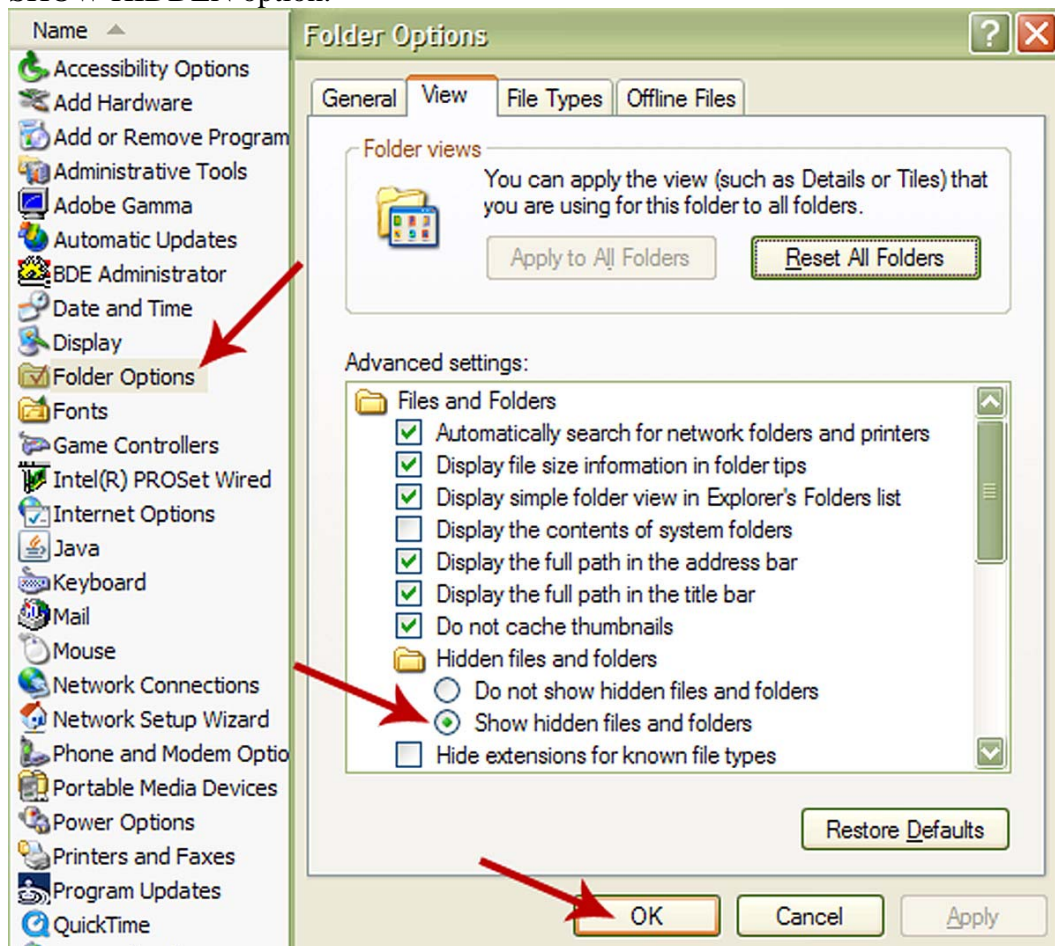
To install the action, place the entire action folder into your PSE effects folder. Be sure to remove it from the original CGE\_ folder first. To do this, go to My Computer, navigate to the C:/ drive and then **copy this link** into the address bar: C:\documents and settings\all users\application data\Adobe\Photoshop Elements\6.0\Photo Creations\Photo Effects



Next, enable **view hidden files** by going to Control Panel > Classic View



Now click on FOLDER OPTIONS. A pop-up window will appear. Choose the VIEW tab and then click the SHOW HIDDEN option.



Repeat the above steps for all the actions you want to install and then go to the C:\Documents and Settings\All Users\Application Data\Adobe\Photoshop Elements\6.0 folder and delete the file called: ThumbDatabase.db3 (I suggest you install as many action as possible before doing this step, because it takes a long time to recreate the database once that file is removed.)

Now you can launch the Elements 6 program. Click on Effects Palette > Photo Effects > Show All. You will see it building the thumbnail image of the action you just installed.



Your actions are now ready to use.

#### TO USE THE ACTIONS:

1. Open up the photo you want to enhance.
2. Go to the Effects Palette > Photo Effects > Show All and locate the action you want to use.

3. Double click the thumbnail of the action you want to use.

4. Wait for the action to play.

Your action should now have run. If your action has multiple layers, you can further adjust or tweak each one to work best with your specific photo. Refer to any help documents that may be included with the action set.

Have fun!!