

## LOADING BRUSHES IN PS Elements 6

by Kim Hill

If you have any questions, please feel free to contact me at [kim@cgsentials.com](mailto:kim@cgsentials.com).

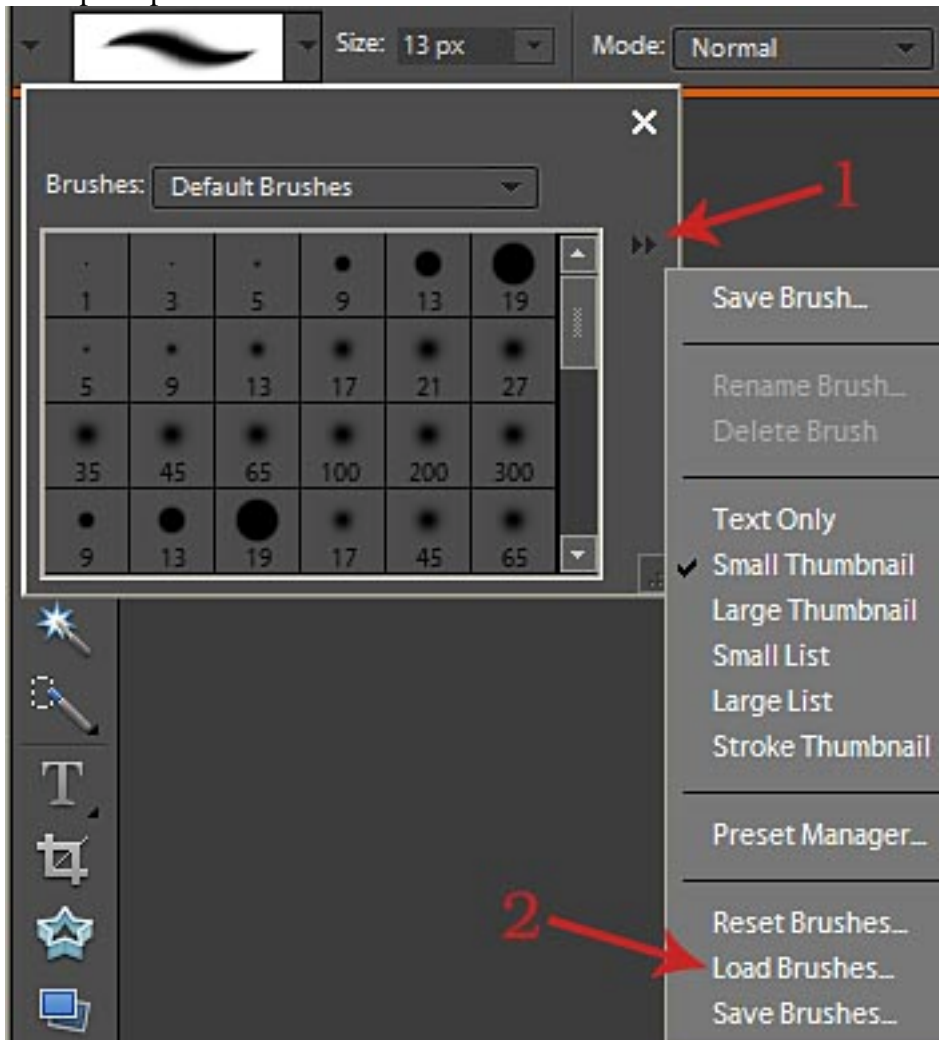
Open up PSE 6 and click on the brush tool in the tool box on the left side of your screen.



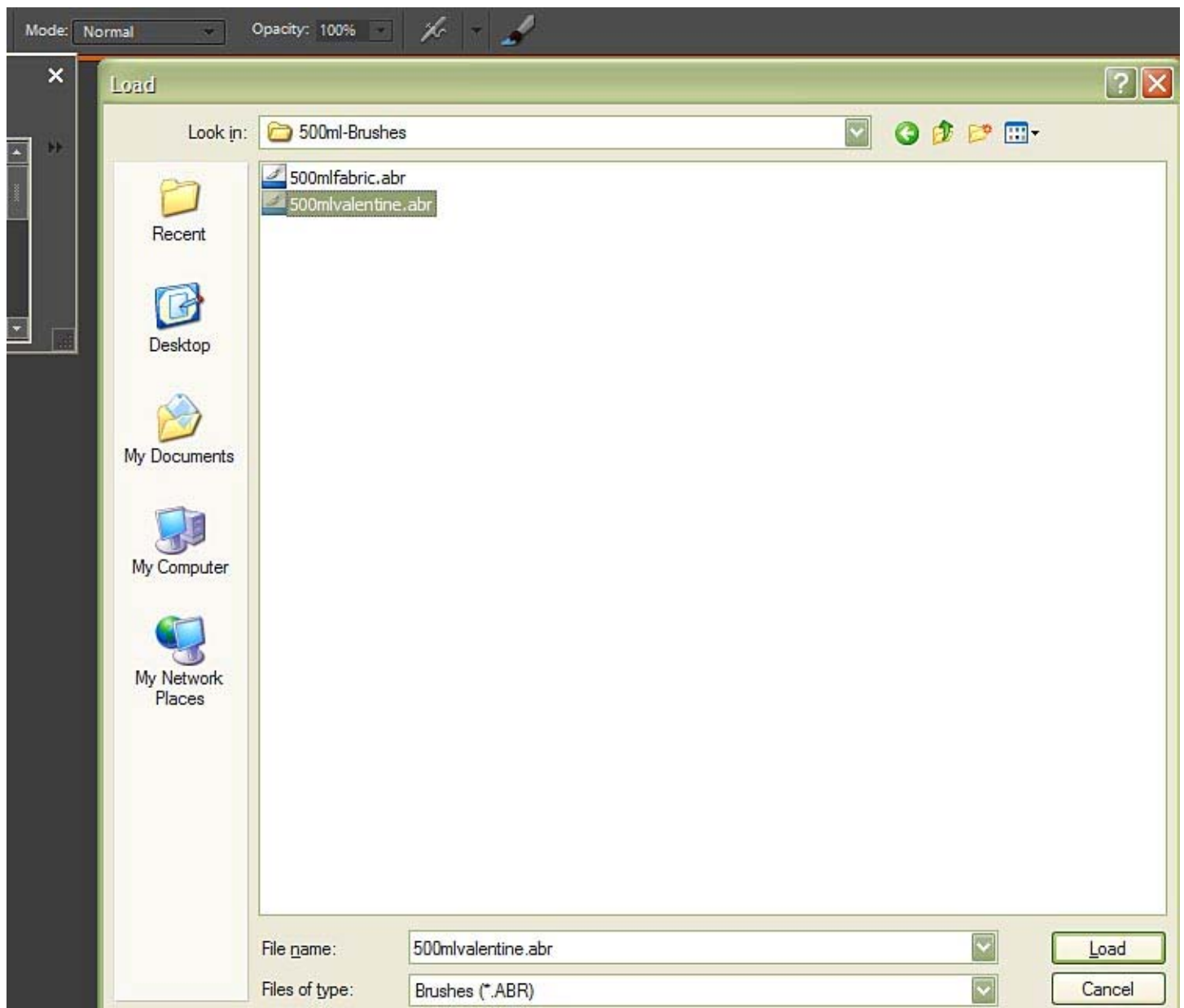
Now go up to the options bar at the top of your screen. You will see all the different options you can apply to your brush up here. To install a new brush, click on the arrow that is next to the brush image.



A drop-down menu will appear. You can either select a pre-made brush from the default brushes, or you can install a new brush. To install a new brush, click on the double-arrow as shown at #1 below. A fly-out menu will open up. Scroll down to LOAD BRUSHES as shown in #2.



A navigation window for your computer's hard drive will open. You will now need to locate the brushes that you want to install. If you have downloaded brushes from the web, simply locate wherever you saved them and then you can click on the individual .ABR file and then click LOAD.



Repeat these steps for as many brushes as you would like to load.