

## LOADING AND USING PATTERNS in PS Elements 3, 4, 5, 6

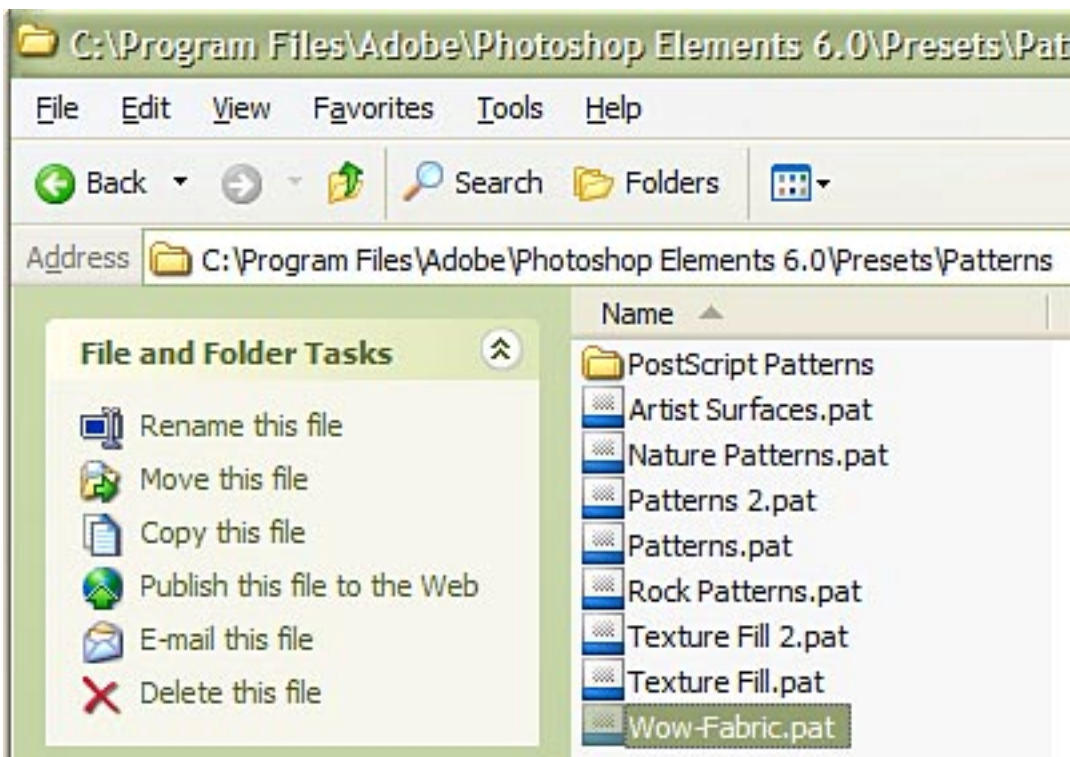
by Kim Hill

If you have any questions, please feel free to contact me at [kim@cgsentials.com](mailto:kim@cgsentials.com).

By using pre-made patterns, you can mix up the look of your elements with a few simple adjustments.

### TO INSTALL PATTERNS:

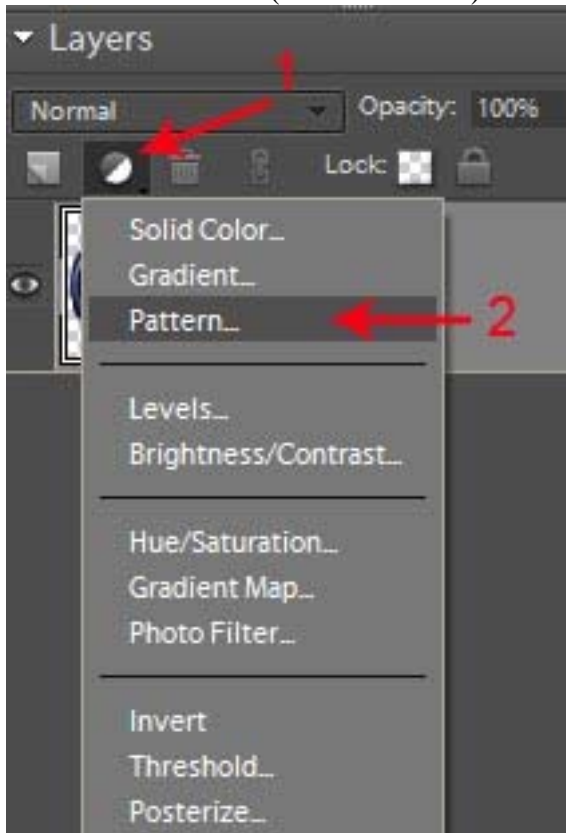
- Close out Elements if it is open.
- Unzip the pattern file you downloaded
- Copy and paste the patterns to c:\Adobe\Photoshop Elements 6.0\Presets\Patterns
- *If you are using a different version of PSE, simply place the file in Photoshop Elements 5.0 or Photoshop Elements 4.0, and then into the Presets\Patterns subfolders.*



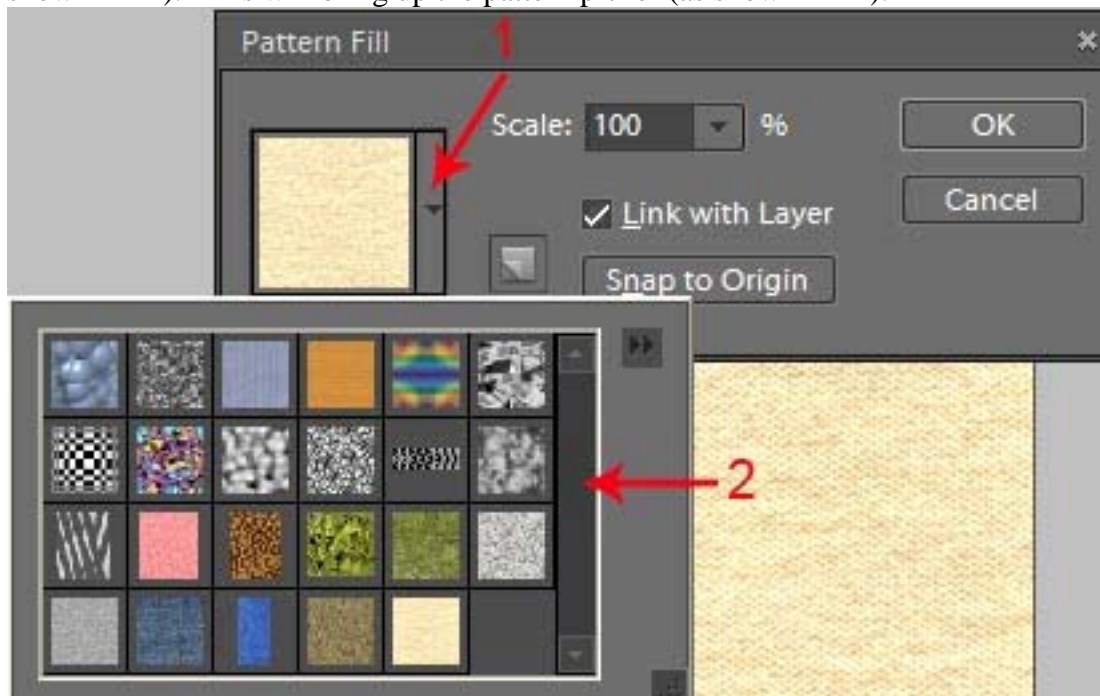
- Close out the window.
- Now open up the Elements program.....it may take a few minutes as the previews rebuild.
- You are now good to go.

## USING PATTERNS:

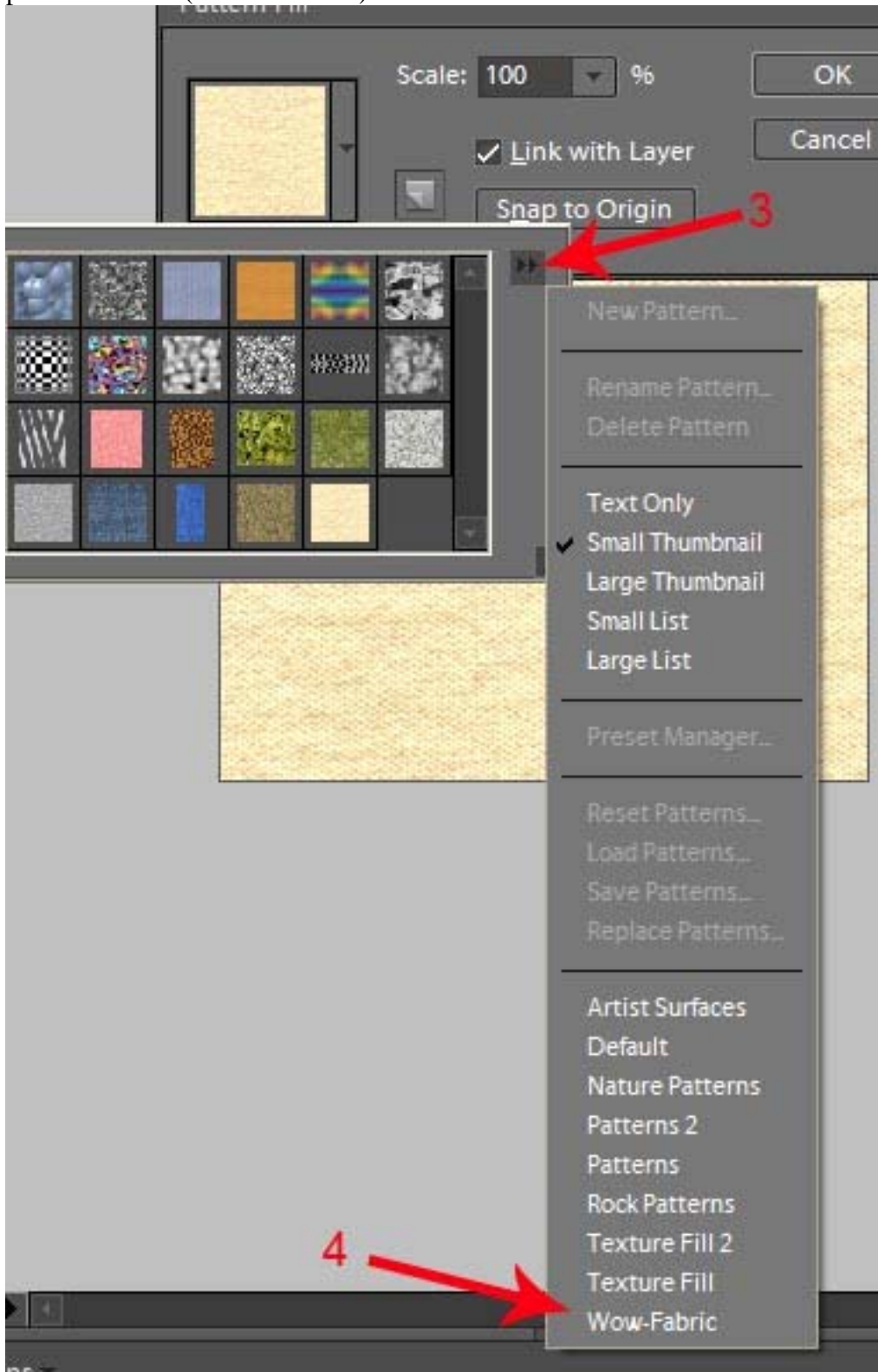
First, open up an element you wish to alter. I'm going to use a button. Now go to the layers palette in the lower right corner of your screen. Click on the half-moon icon to create an adjustment layer (as shown in #1) and then click on PATTERN (as shown in #2).



A pattern fill window will open up on the screen and the default pattern will be applied to your element. You can now select which pattern you would like to apply by clicking on the little arrow next to the pattern icon (as shown in #1). This will bring up the pattern picker (as shown in #2).

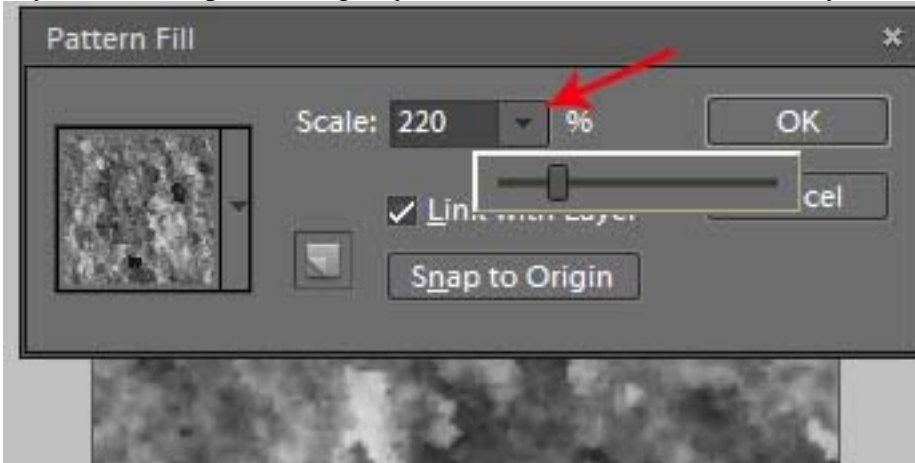


Choose any pattern you like from the icons shown and then click on it. If the pattern you want is not shown, click on the double arrow (as shown in #3) and a fly-out window will appear giving you more options of patterns to load (as shown in #4).

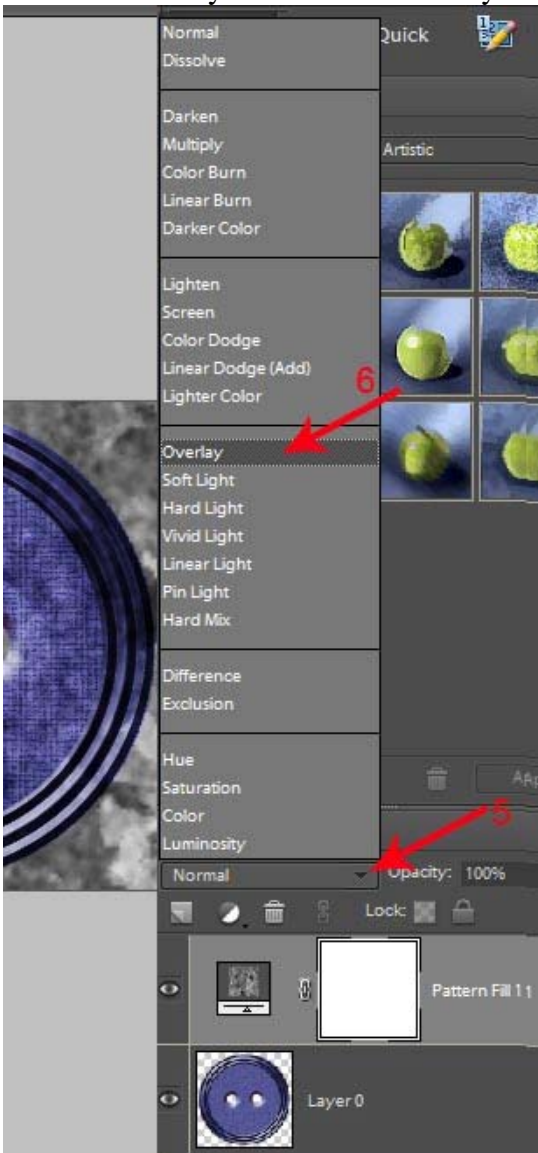


I'm going to pick Texture Fill 2. You will now see only the patterns from the Texture Fill 2 collection. Find one you like and click on it. I'm going to choose Stucco 4.

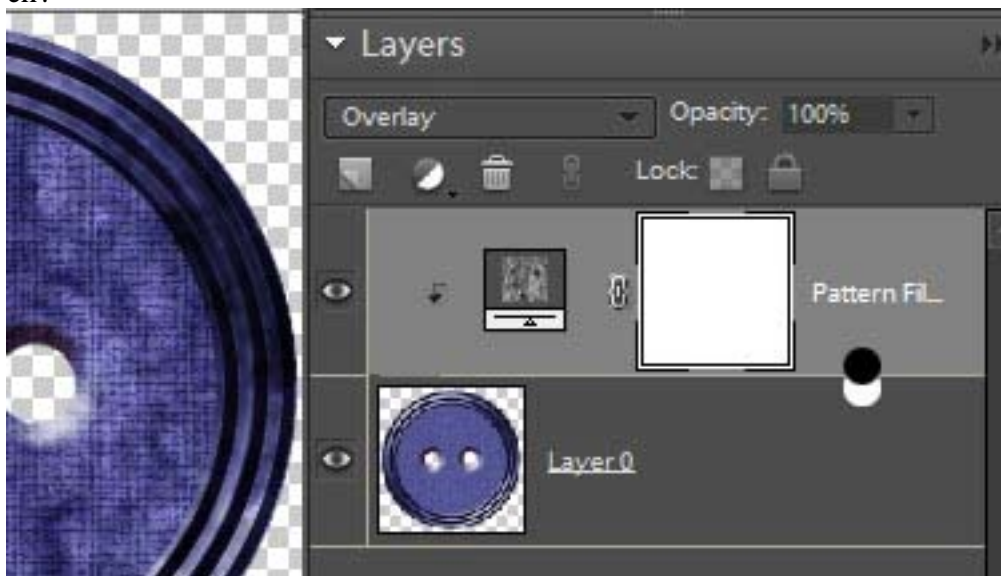
Now the size of the pattern defaults to 100%. But if you want the pattern to be smaller, you can lower the scale. If you want the pattern larger, you can increase the scale. Once you decide on the size of the pattern, click OK.



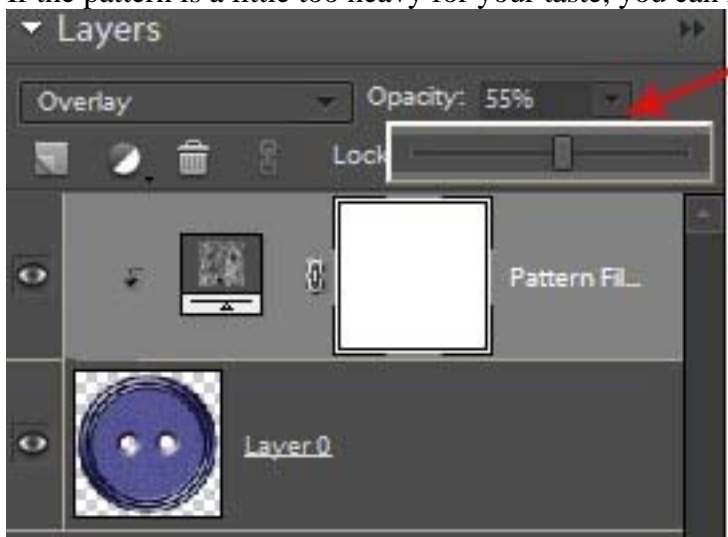
Okay, so now you can adjust the blending mode of the pattern so that it blends nicely with your element. Click on the arrow next to the word NORMAL (as shown in #5). I'm choosing OVERLAY as the blending mode (as shown in #6), but you may want to scroll through the different options because SOFT LIGHT or one of the other modes may be better suited for your element.



The last thing we need to do is apply the pattern fill as a clipping mask. This is really easy. In the layers palette, press the ALT key and hover your mouse on the line between the pattern fill layer and the element layer. Your cursor will change appearance and look like two circles interconnected. Continue holding the ALT key and click your left mouse button. Instantly, you will see your pattern is now clipped to the element. Cool, eh?



If the pattern is a little too heavy for your taste, you can now lower the opacity until it looks better to you.



Once you are satisfied with the look, simply merge the layers together and save it as a new document. To merge the layers, you can either press Control-E, or go up to the options bar and click on LAYER>MERGE DOWN.

Have fun playing!!