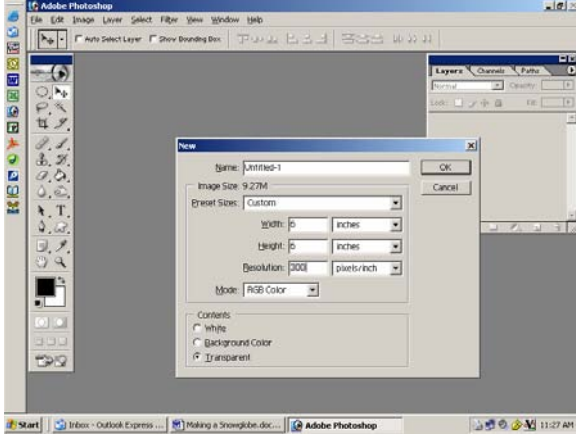


# MAKING A SNOWGLOBE – PHOTOSHOP TUTORIAL

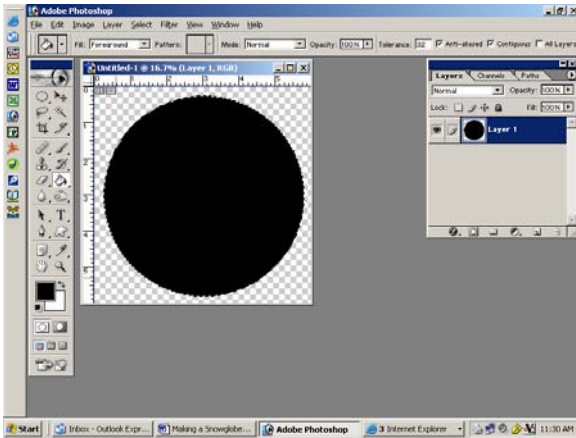
By Kim Hill

If you have any questions about this tutorial, please contact me at [kim@cgsentials.com](mailto:kim@cgsentials.com)

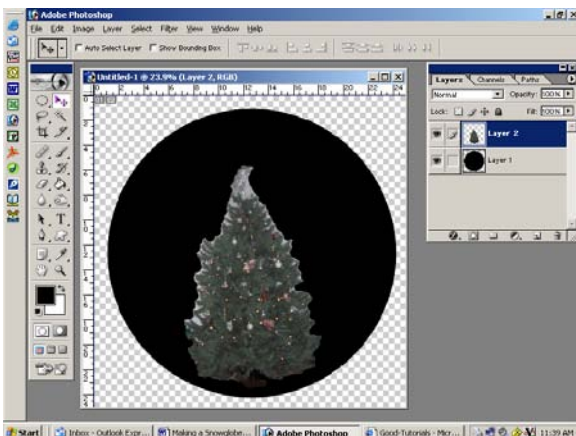
Open a new document that is 6” square, 300 dpi and a transparent background.



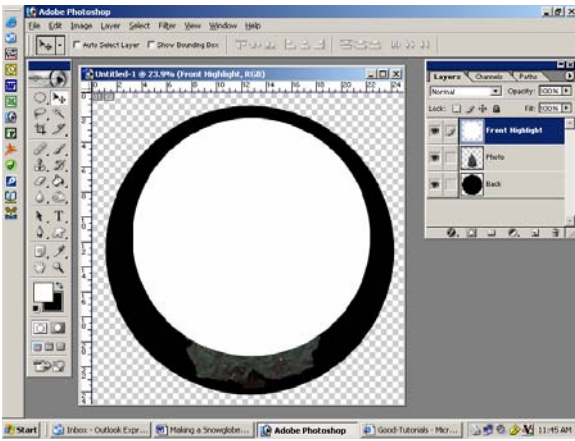
Grab your square marquee tool and change it to a circle. Draw a nice size circle that will fill most of the page. To make it proportionate, hold the shift key while dragging your mouse. Grab your paint bucket tool from the tool palette (6<sup>th</sup> tool down on the right) and fill your circle with black.



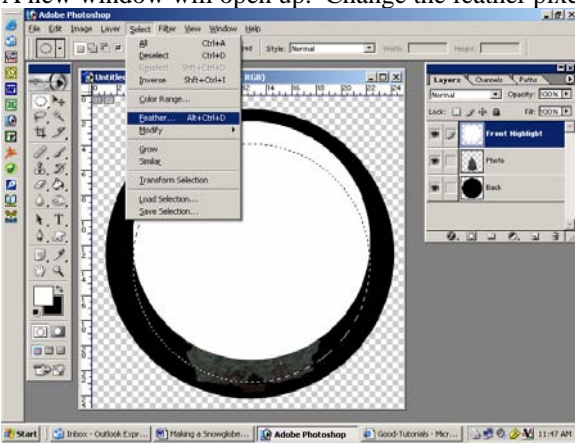
Go find the photo you want to insert into the snowglobe. Open it up and drag the image onto your black circle. Depending on the image you choose, you may want to use the extraction tutorial to remove your subject from the background prior to placing it on your black circle.



Create a new layer in your layers palette. Then create a new circle that is smaller than your black circle. This will become a highlight when you are finished.

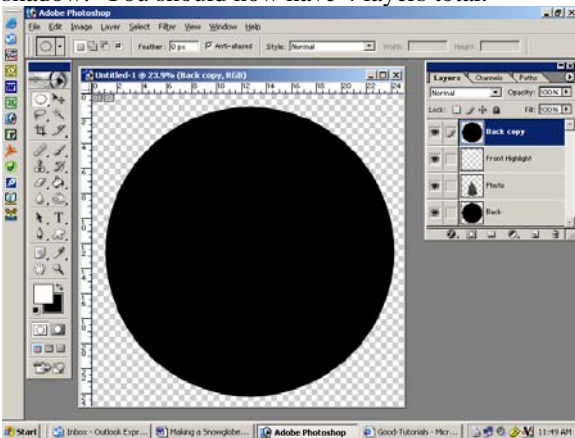


Now keep your circle selected and press the down arrow several times to nudge the selected area. Now click on Select/Feather. A new window will open up. Change the feather pixels to 20.

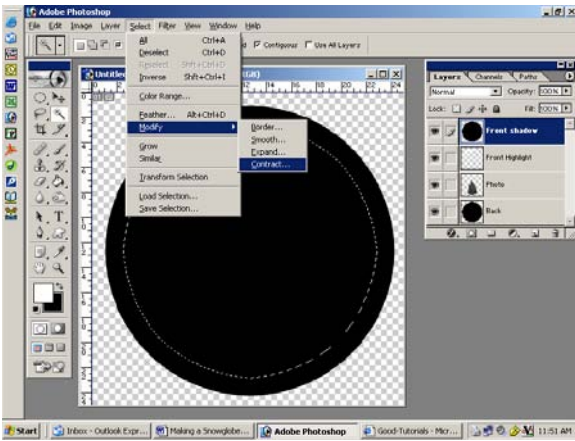


Then press the delete key one time. Voila – you now have a front highlight.

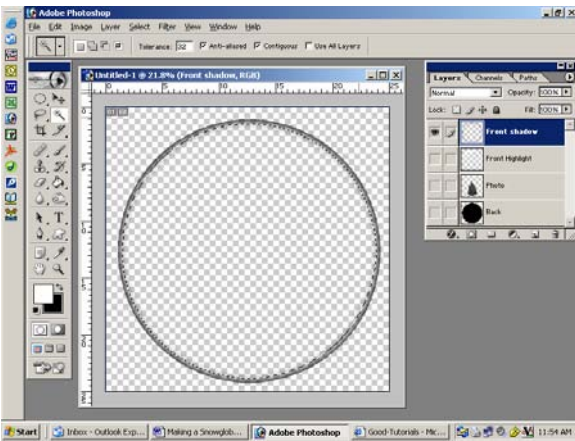
Okay, now you need to go to your layers palette and select the black circle. Duplicate this layer by right-clicking on the layer and selecting Duplicate. Rearrange your layer order and place this new black circle on top of everything else as it will become your front shadow. You should now have 4 layers total.



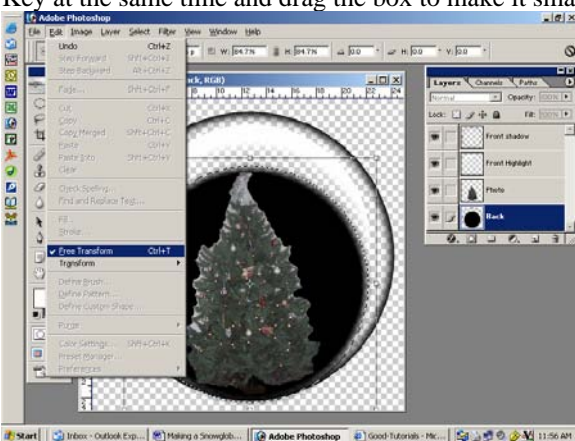
Get your magic wand (below the arrow tool in the tool palette) and click on this circle to select it. Then click on Select/Modify/Contract. You will change the number to 20 or more (I'm using 25).



Now keep your contracted circle selected. Now click on Select/Feather. A new window will open up. Change the feather pixels to 20 and press delete. If you turn off the “eyes” on your other layers, you will see the result you just created. It should look like this:

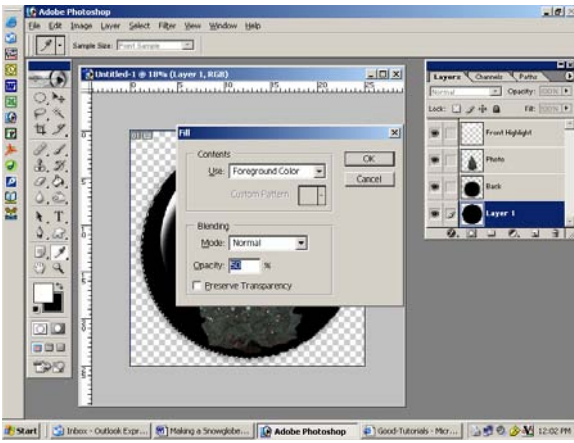


Now go back to your first black circle and duplicate it. You will need to make this circle smaller in order for it to become the background shadow. To do this, click on the layer. Then click on Edit/Free Transform. Grab the corner of the box and hold the Shift Key at the same time and drag the box to make it smaller. When it is a size you like, click on the arrow tool and then click Apply.

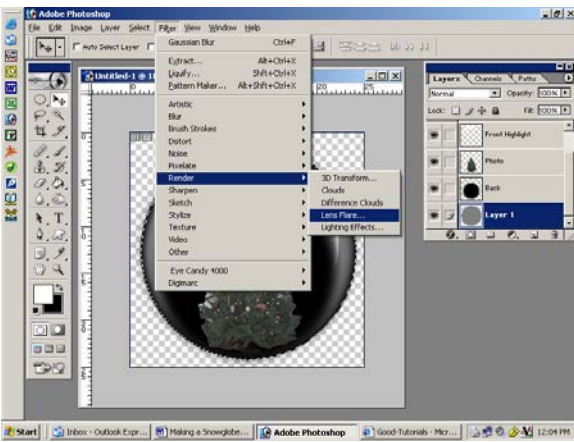


To soften the edges of this shadow, click on Filter/Blur/Gaussian Blur.

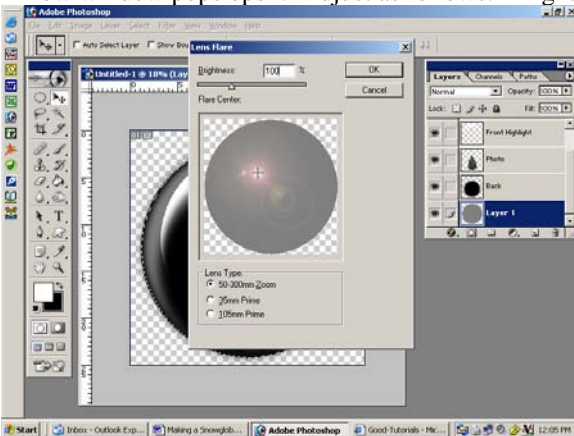
Let’s go back to the original black circle layer again. This time, click on Edit/Fill. A new window will pop open. Change the fill percentage to 50%.



Now we're going to add a little zing to make it look more like a globe. To do this, we are going to click on Filter/Render/Lens Flare.



A new window pops open. Adjust as follows: Brightness 100%; Lens Type 50-300mm zoom.; and move the flare where you want it.



Change the Layer Mode by clicking on the drop down button in the layers palette. Select overlay. Rearrange your layer order so that this layer is on top of everything else.

Now you will need to play around with the opacity of each layer until you are satisfied with it. Create a base and add some snowflakes using the star paintbrush if you want. Done!



This is my final snowglobe. I changed the background shadow to a pleasing blue color since I wanted mine to look more like it was outdoors. You can do the same if you want. Have fun!!